



International Journal of Innovative Research in Science Engineering and Technology (IJIRSET)

(A Monthly, Peer Reviewed, Refereed, Scholarly Indexed, Open Access Journal)



Impact Factor: 8.699

Volume 15, Issue 4, April 2026

Density-Based Smart Traffic Control System

PL Subramanian, M Hariharan , MR Barath , K Deepak

Assistant Professor of the Dept. of Information Technology, K L N College of Engineering, Madurai,
Tamil Nadu, India

B.Tech Student, Dept. of Information Technology, K L N College of Engineering, Madurai, Tamil Nadu, India

B.Tech Student, Dept. of Information Technology, K L N College of Engineering, Madurai, Tamil Nadu, India

B.Tech Student, Dept. of Information Technology, K L N College of Engineering, Madurai, Tamil Nadu, India

ABSTRACT: The *Abstract* - The rapid increase in urban population and vehicular density has significantly impacted the efficiency of traditional traffic management systems. Conventional traffic signal control mechanisms operate on fixed timing schedules, which do not adapt to real-time traffic conditions, leading to congestion, increased waiting times, and inefficient road utilization.

This paper presents a Density-Based Smart Traffic Control System that leverages Artificial Intelligence (AI), image processing, and data analytics to dynamically manage traffic signals based on real-time vehicle density. The proposed system utilizes camera-based monitoring to capture traffic data, which is then processed using intelligent algorithms to estimate vehicle density on each lane. Based on this analysis, signal timings are adjusted automatically to optimize traffic flow.

KEYWORDS: Smart Traffic Control, Traffic Density Estimation, Artificial Intelligence, Image Processing, Real-Time Traffic Management, Intelligent Transportation Systems (ITS), Signal Optimization, Computer Vision, Smart Cities, Traffic Congestion Reduction

I. INTRODUCTION

The Urban traffic congestion has become a major challenge due to the rapid increase in population and vehicle usage. Efficient traffic management systems are essential to ensure smooth transportation and reduce delays. Traditional traffic control systems relied on fixed-time signal mechanisms, where signal durations are predetermined and do not change based on real-time traffic conditions. While these systems are simple to implement, they often result in inefficient traffic flow, increased waiting times, and congestion during peak hours [1].

To address these limitations, researchers introduced adaptive traffic control systems that adjust signal timings based on traffic conditions. Early approaches utilized sensor-based technologies such as inductive loop detectors and infrared sensors to estimate vehicle density. Although these systems improved traffic flow to some extent, they required high installation and maintenance costs and were limited in scalability [2], [3]. With advancements in computer vision, image processing-based traffic monitoring systems gained attention. These systems use cameras to capture real-time traffic images and apply algorithms to detect and count vehicles. Compared to traditional sensor-based approaches, image processing provides higher flexibility and wider coverage. However, early implementations faced challenges in accuracy under varying lighting and weather conditions [4], [5].

Recent studies have focused on real-time traffic density estimation using deep learning techniques. Convolutional Neural Networks (CNNs) have been widely used for vehicle detection and classification in traffic images. These approaches significantly improve detection accuracy and enable dynamic traffic signal control. However, implementing such systems in real-world environments requires careful optimization for latency and processing speed [8], [9].

II. LITERATURE SURVEY

[1] Business Intelligence Tools for Data Analytics (2019)

Researchers studied tools like Tableau and Power BI for analyzing business data and generating dashboards. These

tools helped organizations visualize sales trends, customer behavior, and performance metrics effectively.

Limitation: Requires technical knowledge and manual effort to interpret data, making it less accessible for non-technical users.

[2] Natural Language Processing for Data Query Systems (2020)

This research focused on using NLP techniques to allow users to query databases using natural language instead of structured queries. It improved accessibility and user interaction with data systems.

Limitation: Limited understanding of complex queries and lacks integration with voice-based systems.

[3] Conversational AI for Business Analytics (2021)

Researchers developed AI-powered chatbots to provide business insights through conversational interfaces. These systems used machine learning models to interpret queries and generate responses.

Limitation: Accuracy depends on training data and lacks deep integration with real-time data analytics.

[4] Voice-Enabled Intelligent Systems Using Speech Recognition (2022)

This study explored the use of speech recognition and text-to-speech technologies to build voice-enabled systems for user interaction. It improved accessibility and hands-free operation.

Limitation: Not fully integrated with data analytics systems and may face challenges with speech accuracy in noisy environments.

III. METHODOLOGY

The proposed Density-Based Smart Traffic Control System is designed to dynamically manage traffic signals based on real-time vehicle density using image processing and Artificial Intelligence techniques. The methodology consists of several stages, including data acquisition, preprocessing, vehicle detection, density estimation, and signal control.

1. Data Acquisition

Traffic data is collected using cameras placed at road intersections. The cameras continuously capture real-time video of traffic flow. The captured video is divided into individual frames for further processing.

2. Image Preprocessing

Each frame undergoes preprocessing to improve image quality and ensure accurate detection. The preprocessing steps include:

Conversion of RGB images to grayscale

Noise reduction using filtering techniques

Image enhancement for better clarity

These steps help in improving the performance of the detection algorithm.

3. Vehicle Detection using YOLO Algorithm

The system uses the YOLO (You Only Look Once) algorithm for real-time vehicle detection. YOLO is a deep learning-based object detection technique that can identify multiple objects within a single frame efficiently.

The model processes each frame and detects vehicles such as cars, buses, and bikes

Bounding boxes are generated around detected vehicles

The algorithm provides high accuracy and fast processing suitable for real-time applications

4. Vehicle Counting and Density Estimation

After detecting vehicles, the system counts the number of vehicles present in each lane.

Based on the vehicle count, traffic density is classified into three levels:

Low Density

Medium Density

High Density

This classification helps in determining traffic conditions at the intersection.

5. Signal Control Logic

The system dynamically adjusts traffic signal timings based on the detected density:

High density → Longer green signal duration

Medium density → Moderate signal duration
 Low density → Shorter green signal duration
 This ensures efficient traffic flow and reduces congestion and waiting time.

6. Continuous Monitoring and Updating

The system continuously processes incoming data and updates signal timings in real time. This adaptive approach allows the system to respond quickly to changing traffic conditions. **A. Requirement Analysis and System Design**

SYSTEM ARCHITECTURE

System Design is a critical phase in the software development lifecycle where the architecture, components, modules, interfaces, and data flow of the system are defined. For the Density-Based Smart Traffic Control System, the design focuses on building an intelligent, scalable, and efficient software solution capable of handling real-time traffic data and making dynamic decisions.

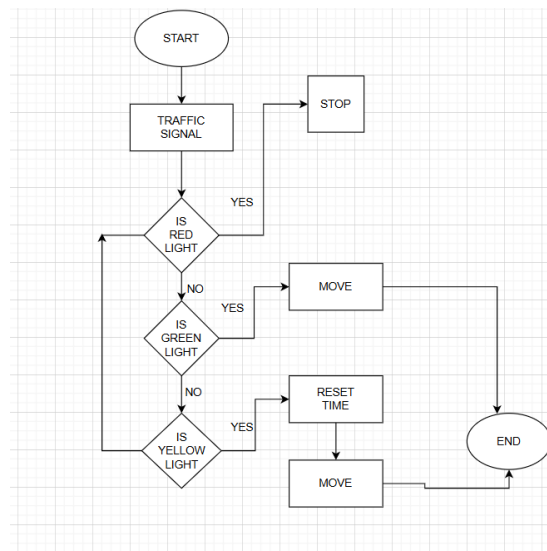


Figure 8: Overall System Architecture and Process Flow

A. Architecture Overview

The system is divided into the following layers:

1. **Input Layer (Data Acquisition)**
 - Captures real-time data from cameras
 - Handles video/image input streams
2. **Processing Layer**
 - Performs image preprocessing
 - Detects vehicles using algorithms
3. **Decision Layer (AI Engine)**
 - Analyzes traffic density
 - Determines optimal signal timing
4. **Control Layer**
 - Sends commands to traffic signals
 - Adjusts signal duration dynamically
5. **Database Layer**
 - Stores traffic data and logs
 - Supports historical analysis
6. **Presentation Layer**
 - Displays system status
 - Provides monitoring dashboard

IV. EXISTING SYSTEM

The existing traffic control system is primarily based on fixed-time signal operation. Each traffic signal is programmed with a predefined time interval, regardless of the traffic density at intersections.

Working of Existing System

- Traffic lights operate on a timer-based mechanism
- Each lane gets equal or fixed time duration
- No real-time traffic data is considered
- Signals change automatically based on pre-configured settings

Software Characteristics

- Simple embedded software with timer logic
- No integration with real-time data sources
- Minimal computational requirements
- No intelligence or learning capability

Limitations of Existing System

- Inefficient during peak hours
- Increased waiting time for vehicles
- No prioritization for emergency vehicles
- Lack of adaptability to changing traffic conditions
- Increased fuel consumption and pollution

The absence of intelligent software makes the existing system unsuitable for modern traffic management.

V. PROPOSED SYSTEM

The proposed Density-Based Smart Traffic Control System introduces a software-driven intelligent solution that dynamically adjusts traffic signals based on real-time vehicle density.

Working of Proposed System

- Cameras capture real-time traffic images
- Image processing algorithms detect vehicles
- AI models analyze traffic density
- Signal timing is dynamically adjusted
- Continuous monitoring and feedback improve performance

Software Characteristics

- Real-time data processing
- AI-based decision-making
- Automated signal control
- Scalable and modular architecture

Advantages of Proposed System

- Reduced traffic congestion

- Optimized signal timing
- Improved fuel efficiency
- Enhanced road safety

VI. RESULT

The Results and Discussion chapter presents the outcomes obtained after the implementation and testing of the Density-Based Smart Traffic Control System. This chapter focuses on evaluating the performance of the software modules, analyzing system behavior under different traffic conditions, and discussing the effectiveness of the proposed approach. The results demonstrate how the integration of image processing, Artificial Intelligence (AI), and real-time data handling improves traffic signal control compared to conventional systems.

ID	Vehicle Type	Traffic Density	Time	Date
1	Emergency	High	11:00:05 AM	04/04/2026

A. Overview of System Performance

The developed system was tested using various traffic scenarios to evaluate its efficiency and responsiveness. The software successfully captured real-time data, processed images, detected vehicles, calculated traffic density, and dynamically controlled traffic signals. The system demonstrated the ability to adapt to changing traffic conditions in real time. Unlike traditional fixed-time systems, the proposed solution adjusted signal timings based on actual vehicle density, resulting in smoother traffic flow and reduced waiting times. The integration of AI played a key role in enabling intelligent decision-making.

B. Results of Image Processing Module

The image processing module was evaluated based on its ability to accurately detect and count vehicles in different traffic conditions. The system used image preprocessing techniques such as grayscale conversion, filtering, and edge detection to identify vehicles. The results showed that the module performed well under normal lighting conditions, achieving high accuracy in. It was able to distinguish between vehicles and background elements effectively. The system also handled multiple vehicles in a single frame and provided accurate counts for density calculation.

C. Results of Traffic Density Calculation

Traffic density was calculated based on the number of vehicles detected in each lane. The system categorized traffic conditions into different levels such as low, medium, and high density. The results indicated that the density calculation module provided consistent and reliable outputs. It accurately reflected real-time traffic conditions and served as a strong foundation for decision-making. The levels helped the AI module to assign appropriate signal timings.

D. Results of AI Decision-Making Module

The AI module was responsible for analyzing traffic density and determining the optimal signal timing. The results showed that the AI system effectively prioritized lanes with higher traffic density by allocating longer green signal durations. In high-density scenarios, the system increased the green signal time for congested lanes, allowing more vehicles to pass and reducing congestion. In low-density situations, the system minimized unnecessary waiting time by reducing signal duration.

Volume 15, Issue 4, April 2026**|DOI: 10.15680/IJRSET.2026.1504045|****VII. FUTURE ENHANCEMENT**

The Based on the results and observations, several improvements can be made to enhance system performance. The use of advanced deep learning models can improve vehicle detection accuracy under challenging conditions. Integration with IoT devices can provide additional data sources for better decision-making.

Cloud-based processing can be implemented to handle large-scale data efficiently. The system can also be extended to include features such as emergency vehicle prioritization and predictive traffic analysis.

VIII. CONCLUSION

The results and discussion clearly demonstrate that the Density-Based Smart Traffic Control System is an effective solution for modern traffic management challenges. The system successfully integrates image processing, AI, and real-time data analysis to provide intelligent and adaptive traffic control.

The software implementation shows significant improvements over traditional systems in terms of efficiency, accuracy, and responsiveness. Although certain limitations exist, the system has strong potential for real-world applications and can contribute to the development of smart cities.

Overall, the proposed system provides a reliable, scalable, and efficient approach to managing traffic dynamically, reducing congestion, and improving road safety.

REFERENCES

1. S. Russell and P. Norvig, *Artificial Intelligence: A Modern Approach*, 4th Edition, Pearson Education, 2021.
2. R. Szeliski, *Computer Vision: Algorithms and Applications*, Springer, 2019.
3. G. Bradski and A. Kaehler, *Learning OpenCV: Computer Vision with the OpenCV Library*, O'Reilly Media, 2008.
4. Goodfellow, Y. Bengio, and A. Courville, *Deep Learning*, MIT Press, 2016.
5. T. H. Cormen et al., *Introduction to Algorithms*, MIT Press, 2009.
6. Research Article: "Smart Traffic Light Control System Using Image Processing," *International Journal of Engineering Research & Technology (IJERT)*, 2020.
7. Research Article: "AI-Based Traffic Management System for Smart Cities," *IEEE Transactions on Intelligent Transportation Systems*, 2021.
8. OpenCV Official Documentation: <https://docs.opencv.org>
9. TensorFlow Official Documentation: <https://www.tensorflow.org>
10. PyTorch Official Documentation: <https://pytorch.org>
11. Flask Web Framework Documentation: <https://flask.palletsprojects.com>
12. Django Documentation: <https://docs.djangoproject.com>
13. MySQL Documentation: <https://dev.mysql.com/doc>
14. Python Software Foundation, "Python Documentation," <https://docs.python.org>
15. Research Article: "Real-Time Traffic Density Estimation Using Machine Learning," *International Journal of Computer Applications*, 2019.



INTERNATIONAL
STANDARD
SERIAL
NUMBER
INDIA



INTERNATIONAL JOURNAL OF INNOVATIVE RESEARCH

IN SCIENCE | ENGINEERING | TECHNOLOGY

 9940 572 462  6381 907 438  ijirset@gmail.com



www.ijirset.com

Scan to save the contact details